

CADBUTIKEN

About ZWCAD

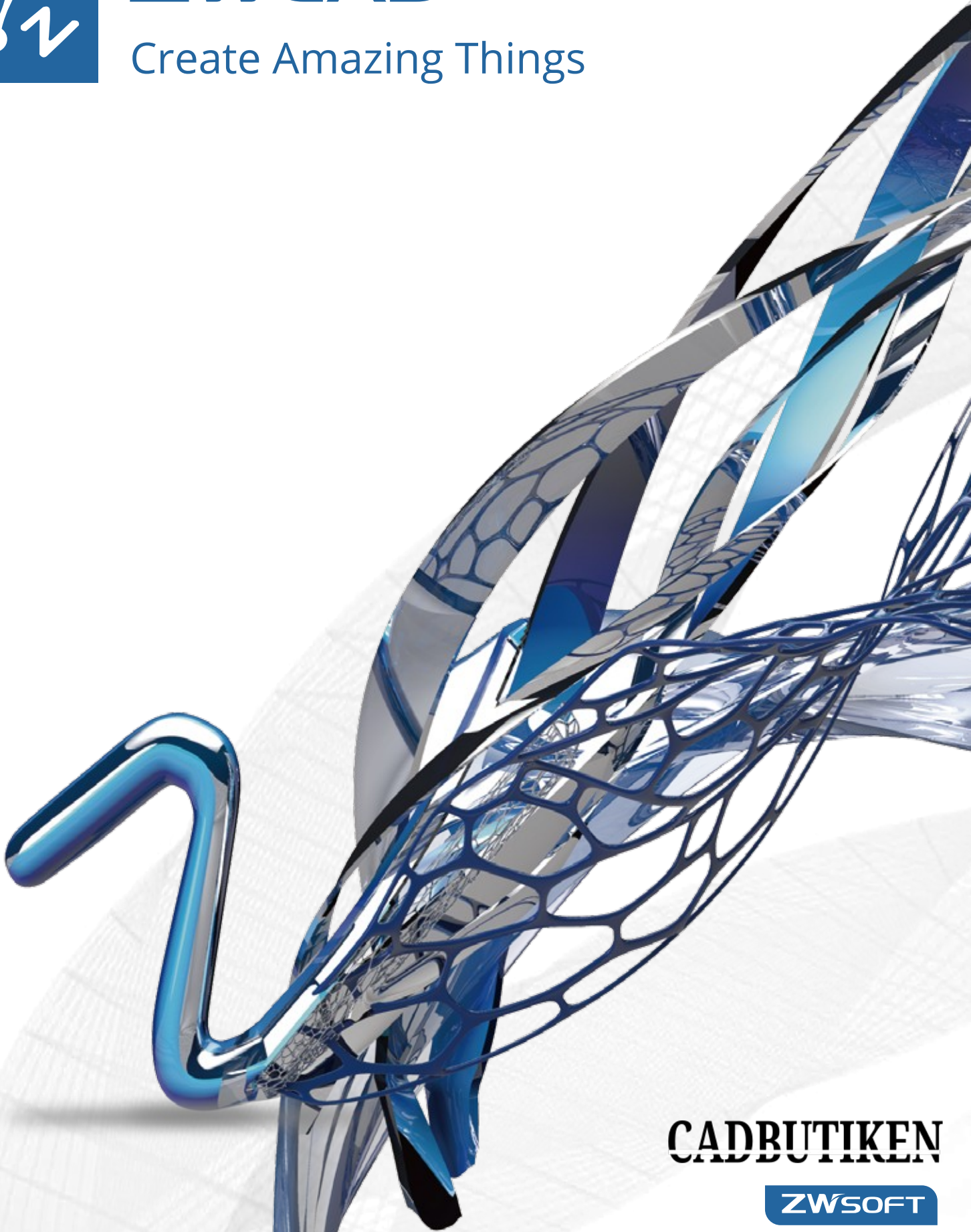
Developed by ZWCAD Software Co., Ltd. (ZWSOFT for short), ZWCAD is a powerful, reliable and DWG compatible CAD solution for worldwide users. It provides innovative, collaborative and customizable features to designers and engineers in various industries such as AEC and MFG. Available in 15 languages, ZWCAD has helped 900,000 users from 90 countries create amazing things.

The Choice of Over 900,000 Users from 90 Countries



ZWCAD

Create Amazing Things



ZWCAD Software Co., Ltd.

Add: 32/F, Pearl River Tower, No.15, Zhujiang West Road,
Tianhe District, Guangzhou 510623, P.R.China
Tel: +86-20-38289780 Fax: +86-20-38288676
Email: sales@zwssoft.com

ZWCAD Distributor

www.cadbutiken.se

www.cadbutiken.se

All trademarks, trade names or company names referenced herein are used for identification only, and belong to their respective holders.
Copyright 2008 - 2019 ZWCAD Software Co., Ltd. All rights reserved.
Reproduction in any form without the permission of the copyright holder is prohibited by law.

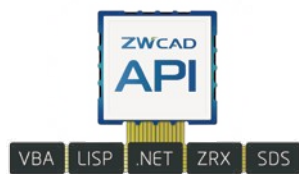
CADBUTIKEN

ZWSOFT

Top 5 Reasons to Choose ZWCAD



1 seamless DWG compatibility



2 code-level compatible API



3 smooth workflow between desktop and mobile devices



4 time-saving innovative tools



5 non-expiring perpetual license with flexible upgrades

Product Introduction

All details for you to create amazing things.

1 Before You Start: Continue Your Habits

- Seamless DWG Compatibility
- Familiar Classic & Ribbon Interfaces
- Customize User Interface

- SmartMouse
- SmartVoice
- SmartSelect

2 Start From Scratch: Visualize Your Idea

- Associative Dimension
- Images
- Multi-line Text
- Revision Cloud
- External References
- Layer
- Block
- Mleader
- Table
- Super Hatch
- Lockup / Unlock

4 3D Modeling: From 2D to 3D

- Viewing
- Modeling
- Visualizing

5 Share It Out: Make Collaboration Easy

- Plot (STB/CTB)
- Smart Plot
- Publish
- Etransmit
- CAD Pockets / CAD Chat

3 Further Your Design: Tools Saving Your Time

- Tool Palettes
- Design Center
- Dynamic Block
- Annotative Object
- PDF Underlay
- Quick Calculator
- File Compare
- Block Attribute Manager

6 Make It Your Own: Powerful Customization

- Code-level Compatible API
- Development Service

Before Starting: Your Most Familiar CAD

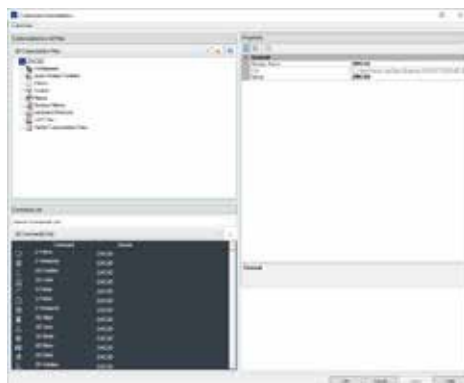
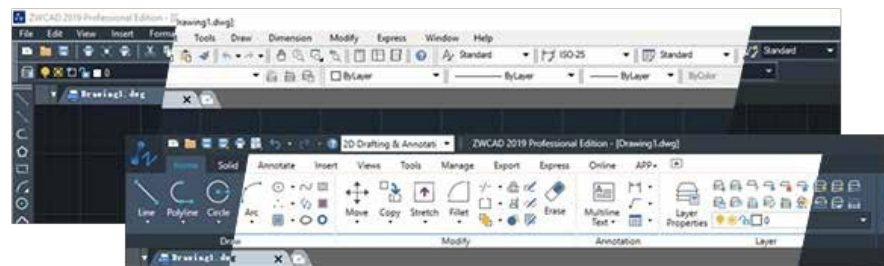


Seamless DWG Compatibility

The seamless .dwg compatibility enables you to open and continue your previous design work, and share your drawings with coworkers and clients, making the workflow more fluent.

Familiar Classic & Ribbon Interfaces

You can toggle easily between Classic and Ribbon interfaces without restarting ZWCAD. What's more, both Dark and Light color schemes are available to satisfy your different preferences.



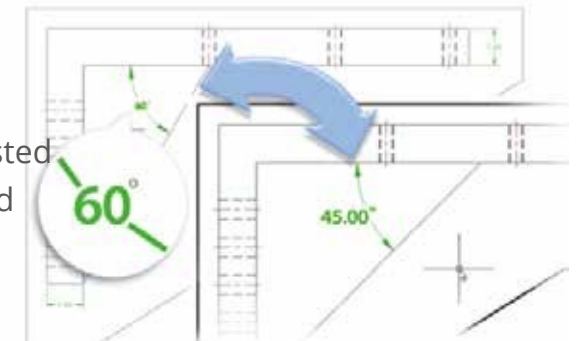
Customize User Interface

You can customize your ZWCAD menu, commands, toolbars, hotkeys, and aliases. Together with the familiar interface and easy-to-use commands, ZWCAD brings you the most comfortable design environment to enable the most efficient work.

Start From Scratch: Visualize Your Idea

Associative Dimension

ZWCAD creates dimensions which measure values, locations and orientations. They are automatically adjusted along with the geometric objects, which is intelligent and makes design work more efficient.

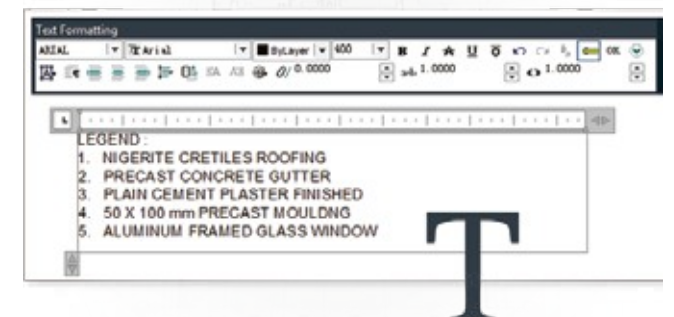


Images

By inserting and editing images in various formats such as BMP, TIFF, GIF, JPG, ECW, JP2 and TARGA easily with ZWCAD's new image processing engine, you can conveniently refer to or design on them to assist your drawings.

Multi-line Text

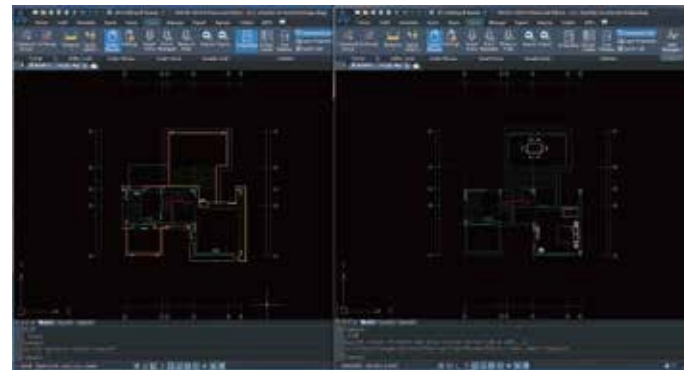
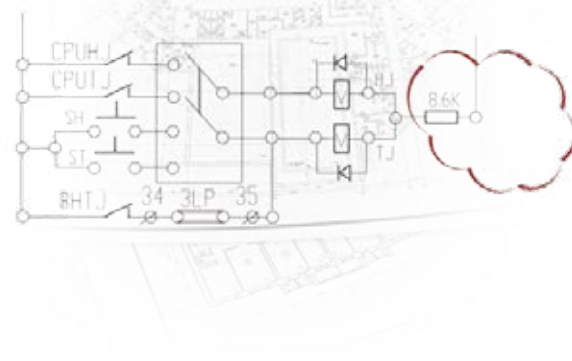
The In-place MText Editor is the best way to create multi-line texts with abundant text styles and paragraph settings. When you set the texts inside the editor, what you see is what you get, which means that you can know how the text will be look like instantly.



Start From Scratch: Visualize Your Idea

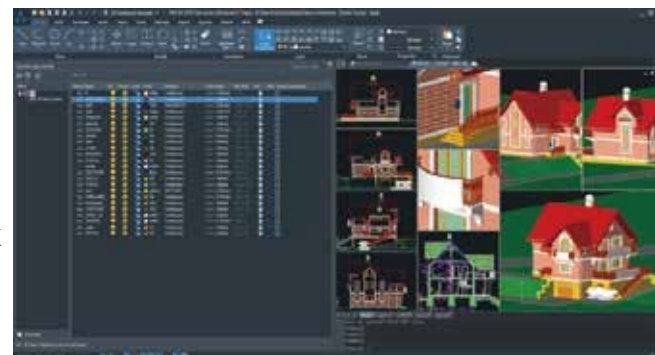
Revision Cloud

Revision clouds help call attention to the areas of a drawing that contain revisions. You can convert objects such as circles, ellipses or polylines to revision clouds or select their styles.



External References

By inserting DWG files as external references, everyone in your team can collaborate together on large drawings without increasing the drawing file size by much.

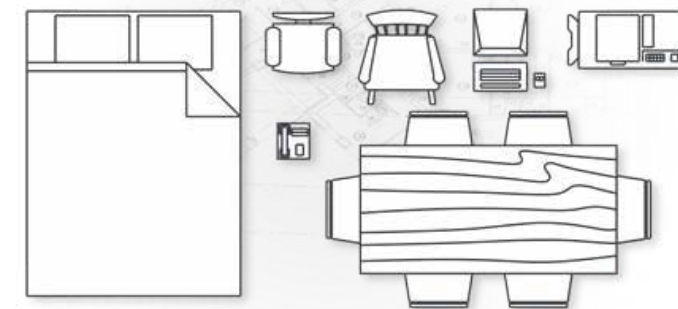


Layer

Layers help you easily manage different types of object in design. By putting different objects into different layers, you can conveniently turn them on and off, or change their properties back and forth in a powerful Layer Manager palette during the whole drafting process.

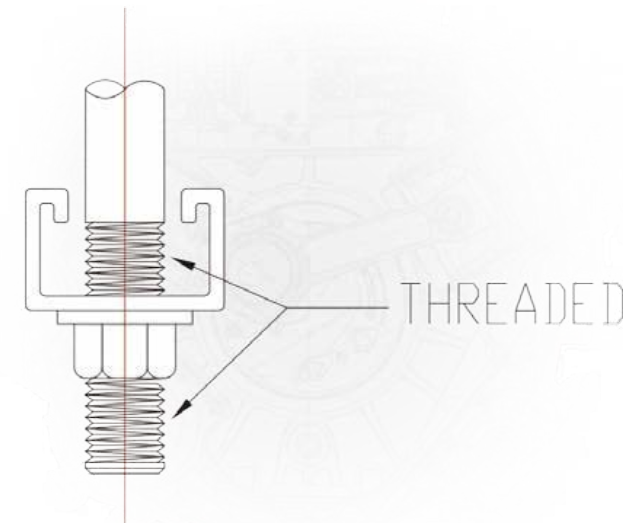
Block

You can create a block through associating several objects, and reference or use it in the same or a different drawing, making your design more convenient and organized.



Mleader

Mleader allows you to connect multiple leaders to one annotation, or add a leader to an existing Mleader object, which can save a lot of time because you don't need to specify the leaders with the same annotation repeatedly.

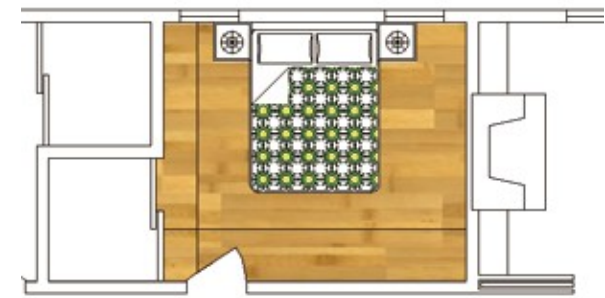


Start From Scratch: Visualize Your Idea

Table

You can easily create and modify tables in your drawings to present data or materials.

CONC. PILE SCHEDULE			
MARK	PILE NO.	LENGTH	VERTICAL REINFORCEMENT
P-1	16[406]	25'-0"[7620]	4-15Mx19'-0"[5791]
P-2	16[406]	30'-0"[9144]	4-15Mx23'-0"[7010]
P-3	16[406]	34'-0"[10363]	4-15Mx26'-0"[7925]
P-4	16[406]	38'-0"[11582]	4-15Mx32'-0"[9754]
P-5	24[610]	32'-0"[9754]	6-20Mx24'-0"[7315]
P-6	24[610]	36'-0"[10973]	6-20Mx27'-0"[8230]



Super Hatch

Not only can you use the command Hatch to fill the enclosed area or object with a solid, gradient or predefined hatch pattern, but Blocks, external drawings or images can also be used as hatch patterns with Super Hatch. Your customizable hatch patterns are accessible.

Lockup / Unlock

Lockup function can lock the selection with a password so that it is visible but cannot be edited, avoiding making changes to the selection mistakenly. You can also make it editable again by the Unlock function.



Further Your Design: Tools Saving Your Time

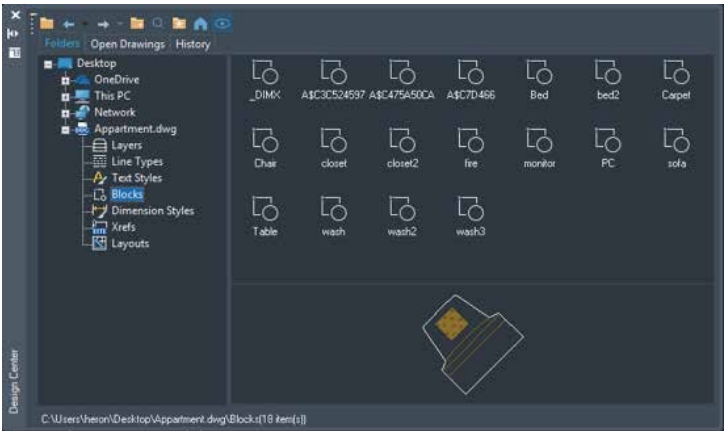
Tool Palettes

The Tool Palettes enables you to store and manage all your frequently-used design resources and functions, no matter it's a block, a hatch pattern or a red dash line with all the properties like Color, Layer and Linetype. Every time you use it, the objects with identical properties will be created, saving you a lot of time for setting them.

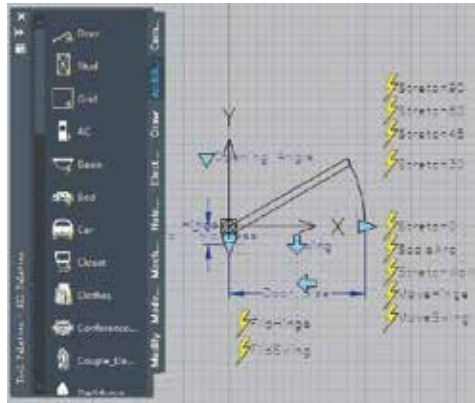


Design Center

The Design Center allows you to search and access any CAD resources stored in your computer or other computers on your local network. You can insert content such as dimension styles, blocks, text styles, line types, and even layers from other drawings to the current drawing, enabling you to design with more materials.



Further Your Design: Tools Saving Your Time

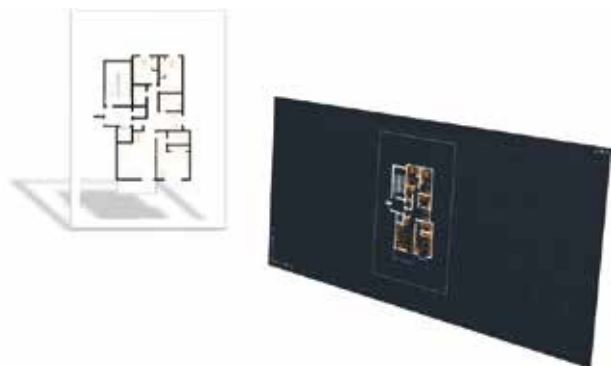
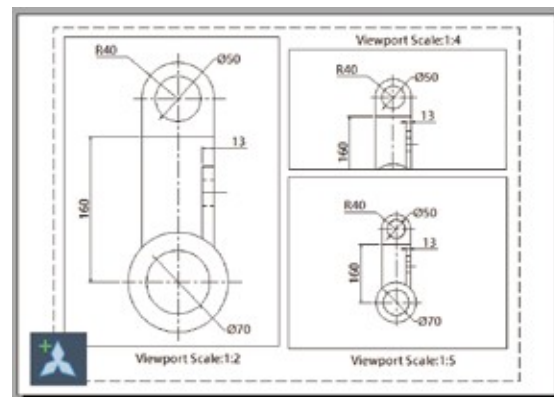


Dynamic Block

The new Block Editor allows you to create and modify Dynamic Block definition by adding various Parameters and Actions, and thus to build your own smart and powerful Dynamic Blocks that suit different design situations.

Annotative Object

Annotations like dimensions and texts can be set as Annotative Objects, enabling their sizes to be adjusted automatically according to different view scales in Model space or Layout viewport, to guarantee their readability on screen and in plotting.

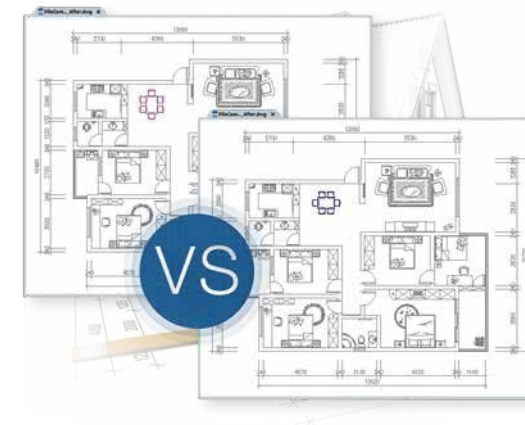
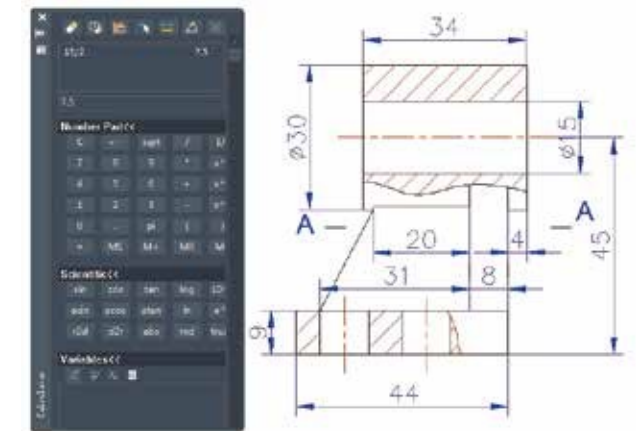


PDF and DWFX Underlay

Both PDF and DWFX files can be attached to your current drawing as underlays and references, so that you can continue to work on the existing designs, instead of starting from scratch.

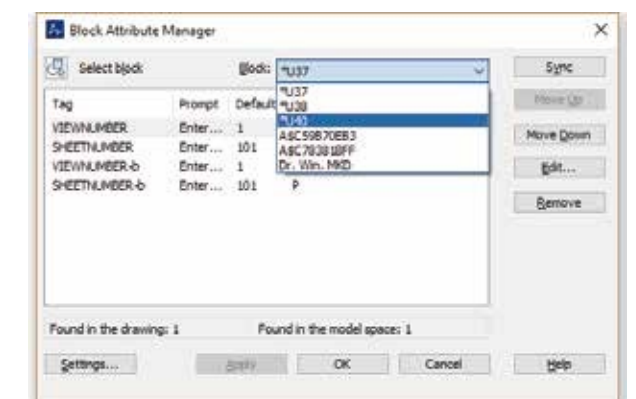
Quick Calculator

Without switching the windows, you can calculate within ZWCAD just as you would with a desktop calculator.



File Compare

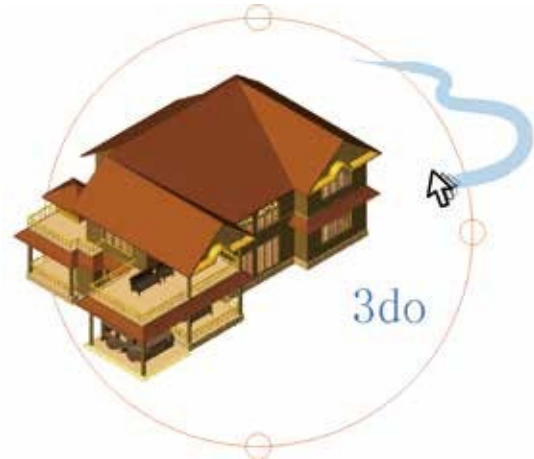
File Compare helps you spot even the most minor differences between two similar drawings by highlighting them in different colors. You can easily find the distinctions between blocks, attributes and texts.



Block Attribute Manager

You can easily view, edit, and synchronize the attributes that have already been attached to a block in the current drawing with the Block Attribute Manager.

Further Your Design: Tools Saving Your Time



SmartMouse

It enables you to execute certain commands by moving your mouse on a certain track to trigger your frequently-used commands such as New, Circle, and Move. You can also customize commands with different mouse actions, which notably accelerates your design.

SmartVoice

You can save your voice information as an entity in your drawing with SMARTVOICE, making it convenient for you to communicate with coworkers by adding annotations or comments as voice messages.



SmartSelect

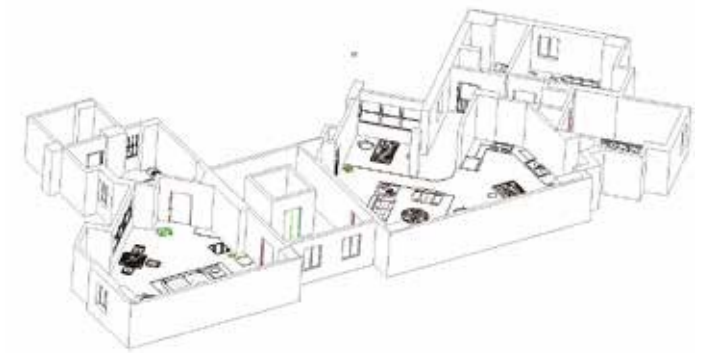
SmartSelect enables you to find similar entities with simple property selection. When you need to find a certain type of Block Reference without considering other complicated properties such as the exact position, you no longer have to use FIND command which contains complex property selection.



3D Modeling: From 2D to 3D

Viewing

You can view your model freely by 3DORBIT command, and present it in a perspective view using DVIEW, which makes it much easier for others understand to your model.



Modeling

You can easily create and modify 3D models with modeling tools such as Solid, Surface and Mesh.

Visualizing

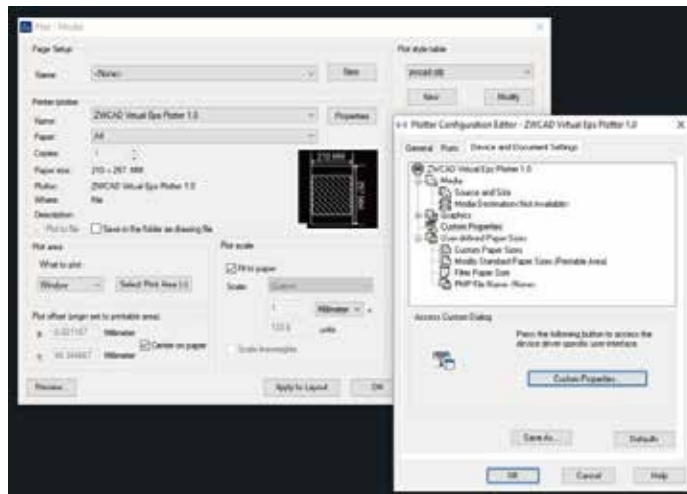
You are able to set different visual styles like Wireframe, Hidden and Shade, and get a photorealistic view with rendering.



Share It Out: Make Collaboration Easy

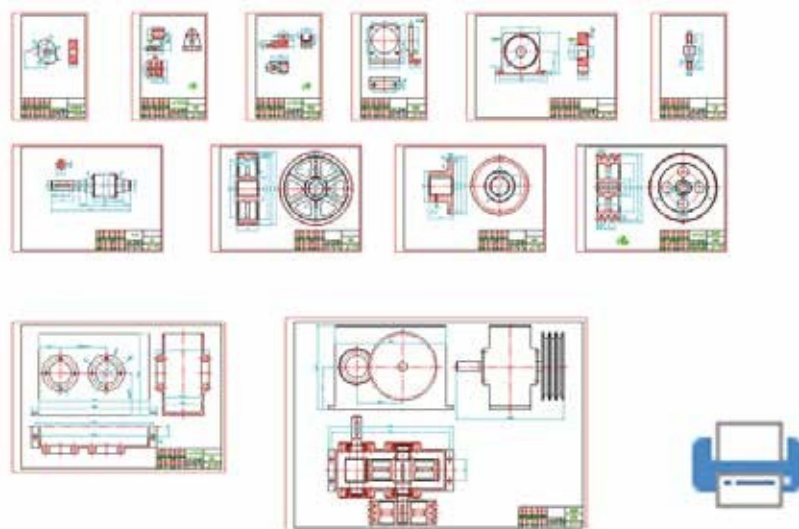
Plot (STB/CTB)

You can plot drawings to both files and paper, and fine-tune the results by adding a plot stamp or setting the paper size, plot scale, and plot style such as line weight, color and dithering by choosing between STB and CTB.



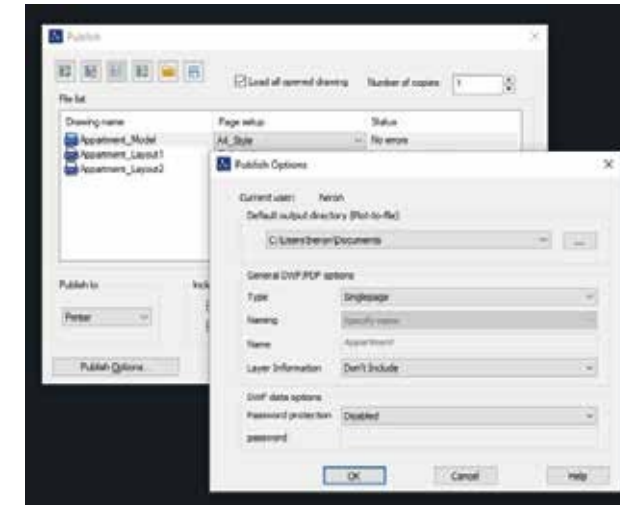
Smart Plot

With Smart Plot, multiple frames can be plotted all at once from the Model space with ZWPLOT command. More efficient plotting process is realized.



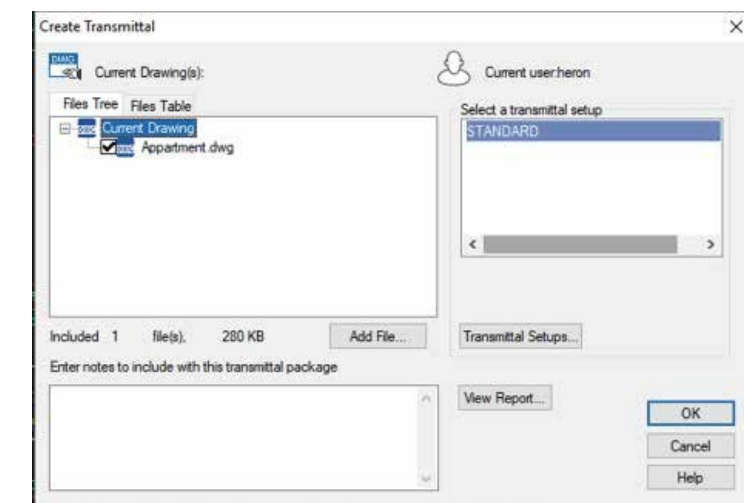
Publish

Models and layouts can be published to a single or multi-page DWF file or plotter, which allows you to share drawings with coworkers or clients safely and quickly.



Etransmit

Etransmit improves the collaboration efficiency between you and your clients – with a simple click, it collects all of the related drawings, images, external references, fonts and other support files you may want to attach and puts them into one package.



CAD Pockets / CAD Chat

CAD Pockets and CAD Chat provide the mobile and the cloud-based solutions to you, which enables you to view, edit, annotate, share and discuss .dwg drawings with your colleagues anywhere and anytime with online storage.



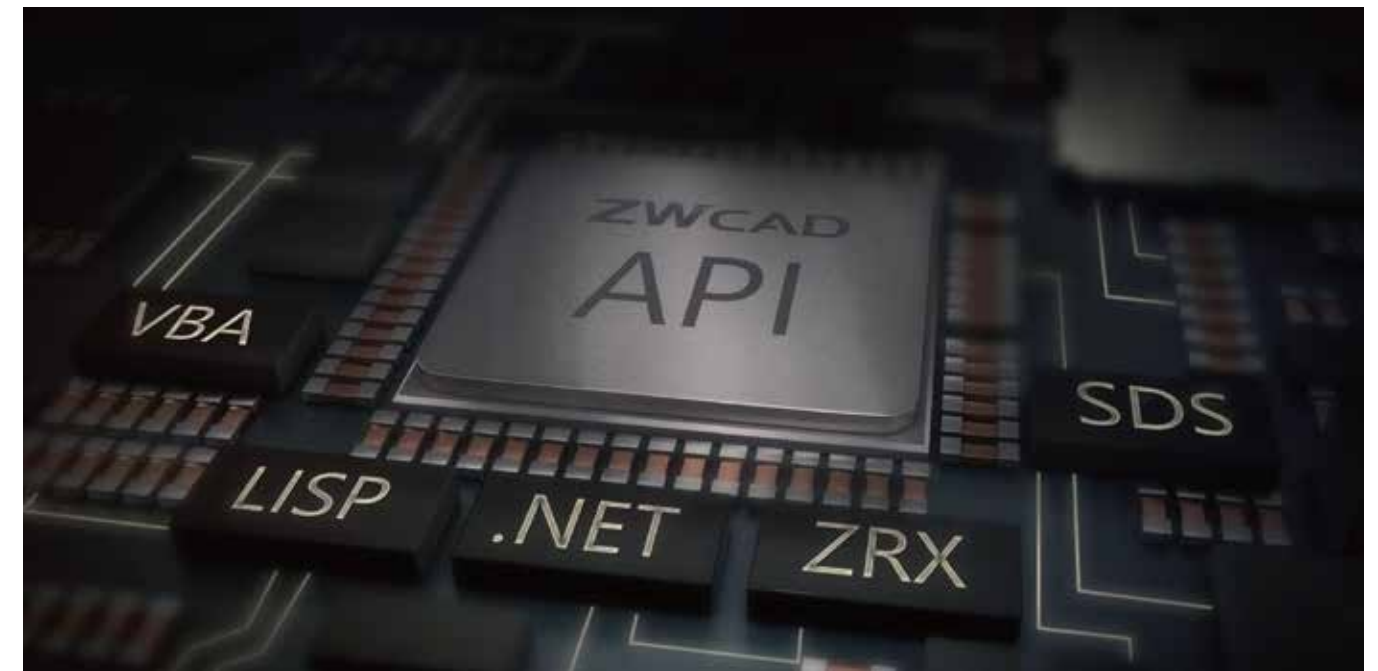
Make It Your Own: Powerful Customization

Code-level Compatible API

To better serve your needs, we've built a developer network for third-party developers to work on an array of add-ons. This solid network provides many different add-ons to make you design easier and more efficient.

Development Service

With customized development service based on ZWCAD, you can make ZWCAD fitter with your workflow. If you need relevant service, please feel free to contact our local resellers to get more information.



ZWCAD vs ACAD

		ZWCAD		ACAD	
		Std	Pro	LT	Full
Compatibility		•	•	•	•
Interface	Classic and Ribbon Interfaces	•	•	•	•
	Customize User Interface (CUI)	•	•	•	•
	Dark/Light UI	•	•	•	•
	Tool Palettes	•	•	•	•
	Properties Palette	•	•	•	•
	Dynamic Input	•	•	•	•
	Auto-complete Command Entry	•	•	•	•
	Drawing Tab Switching	•	•	•	•
	Adaptive Grid	•	•	•	•
		•	•	•	•
Annotation		•	•	•	•
		•	•	•	•
		•	•	•	•
		•	•	•	•
		•	•	•	•
		•	•	•	•
		•	•	•	•
		•	•	•	•
		•	•	•	•
		•	•	•	•
Layer	Layer Properties Manager	•	•	•	•
	Layer Filter	•	•	•	•
	Layer State Manager	•	•	•	•
Xref, Block and Attribute		•	•	•	•
		•	•	•	•
		•	•	•	•
		•	•	•	•
		•	•	•	•
		•	•	•	•
		•	•	•	•
		•	•	•	•
		•	•	•	•
		•	•	•	•
3D	Solid, Surface, and Mesh Modeling		•		•
	Photorealistic Rendering		•		•
	Visual Style	•	•		•
	ACIS Viewing	•	•	•	•
	3D Orbit	•	•		•
Programming		•	•	•	•
		•	•	•	•
		•	•	•	•
		•	•	•	•
		•	•	•	•
		•	•	•	•
		•	•	•	•
		•	•	•	•
		•	•	•	•
		•	•	•	•
Output	CTB & STB Plot Style	•	•	•	•
	Plotting	•	•	•	•
	Publish	•	•	•	•
	Export	•	•	•	•
	eTransmit	•	•	•	•
Innovation		•	•	•	•
		•	•	•	•
		•	•	•	•
		•	•	•	•
		•	•	•	•
		•	•	•	•
		•	•	•	•
		•	•	•	•
		•	•	•	•
		•	•	•	•
Others	File Compare	•	•	•	•
	Quick Calculator	•	•	•	•
	Match Property	•	•	•	•
	Group	•	•	•	•
	Quick Select	•	•	•	•
	Multiline and Multiline Style	•	•		•
	Parametric Drawing				•
	Express Tools	•	•		•
		• Supported			

See How CAD Customer Comment On ZWCAD



“ZWCAD makes designing and processing much faster in large projects. Together with a resonable price, it really helps maintain and improve the quality of our work.”
Guilherme, CIO of CASAIS Group



“We use ZWCAD to edit and simplify design work. A wide range of functions of the product allow us to work comfortably and without any problem. The functionality of ZWCAD certainly meets our requirements.”
Jadwiga Sztelwander, Director of Deltamarin Poland



“It has high compatibility so that it is perfectly compatible with our former CAD solution and can fully replace it. What’s more, not only can it co-work with our system very well, but it also fits in well with other software.”
Adaphol Nillaor, Project Relation of CH. Karnchang